

Master Sync / Master Clock Reference Generator

SPG8000A datasheet

The SPG8000A is a precision multiformat video signal generator, suitable for master synchronization and reference applications. It provides multiple video reference signals, such as black burst, HD tri-level sync, and serial digital and composite analog test patterns, and it provides time reference signals such as time code, NTP (Network Time Protocol), and IEEE 1588 PTP (Precision Time Protocol).

Key features

- Multiple independent black burst and HD tri-level sync outputs provide all the video reference signals required in a video broadcast or production facility
- Four LTC outputs, VITC on black burst outputs, and NTP server provide time reference signals in a variety of formats
- PTP (IEEE 1588) support, including SMPTE ST 2059-2 and AES67 profiles
- GPS/GLONASS-based synchronization gives an accurate time-of-day reference and deterministic video phase reference across multiple independent systems
- Stay GenLock® and Holdover Recovery prevent synchronization shock when the external reference input, PTP, or GPS/GLONASS signal is temporarily lost
- Wide selection of video test patterns in serial digital formats (SD, HD and 3G-SDI) and composite analog formats (NTSC and PAL)
- 4K/UHD formats support with full frame 100% and 75% color bars (Quad Link Square Division)

- Dual hot-swappable power supplies ensure continuous availability of reference signals
- Easy to manage with Web-based interface for remote configuration and SNMP for status and alert information

Applications

- Sync generator and time reference generator for broadcast, studio, mobile, and post-production facilities
- Master or slave (genlock) operation for distributed system architectures
- Video equipment verification, facility link testing, and display calibration

Master video synchronization and time reference generator

The base configuration includes three sync outputs that can be configured with independent output formats and independently adjustable timing offsets. With Option BG, four more analog outputs can be added. A high-accuracy, oven-controlled crystal oscillator provides a stable frequency reference for the system, or the pass-through genlock input can be used to lock to an external video reference or 10 MHz continuous wave signal.

The SPG8000A's Stay GenLock® feature avoids “synchronization shock” if the external reference suffers a temporary disturbance, by maintaining the frequency and phase of each output signal. When the external reference is restored, Stay GenLock® ensures that any accumulated clock drift is removed by slowly adjusting the system clock within standard limits instead of “jamming” back to the correct phase.



Time reference outputs are available in multiple formats. Three independent linear time code (LTC) outputs are available, and a fourth LTC connection can be used as input or output. Each LTC output has independent frame rate selection, time source (time-of-day or program time) and time zone offset. Vertical interval time code (VITC) is available on each NTSC or PAL black output, also with independent time sources and offsets. The SPG8000A can also serve as a Network Time Protocol (NTP) server or as a Precision Time Protocol (PTP) grandmaster clock, providing the time-of-day reference to network-attached devices.

Optional GPS / GLONASS receiver

Option GPS adds an integrated receiver to the SPG8000A that is capable of receiving both GPS and GLONASS signals. When connected to an external antenna that supplies the standard GPS and/or GLONASS RF signal (for example, SPG8000ANT), the SPG8000A can use the GPS/GLONASS system's stable frequency reference.

The GPS/GLONASS signal also includes a precise time-of-day reference that can be used for all time code outputs. Similar to the Stay GenLock® feature, the SPG8000A can maintain the video frequency and phase when the GPS/GLONASS signal is interrupted, and the Holdover Recovery mode will ensure a shock-free realignment of frequency and phase when the GPS/GLONASS signal is restored.

Optional PTP support

Option PTP adds two Precision Time Protocol (PTP) engines to the SPG system. The primary PTP engine has the capability to be a master PTP source or lock the SPG to the PTP as a slave. The secondary PTP engine can only be a master. The secondary engine allows implementing two masters when in Internal mode or locked to GPS, and simultaneous Master and Slave operation.

The black outputs support a 1pps mode. This is useful for measuring timing between systems.

Test signal outputs

The SPG8000A can be optionally configured with a variety of test signal outputs. Option BG includes two composite analog outputs (NTSC or PAL) that can be used to generate test patterns such as color bars, or serve as additional black burst outputs.

Option SDI adds two fully independent serial digital video generator channels of two outputs each. Each channel can be configured to any standard 3G/HD/SD-SDI format and frame rate. The selected test pattern can be generated on both outputs per channel, or one output can generate digital black.

A wide variety of standard test patterns are included, such as color bars, convergence grid, step scales, ramps, multiburst, SDI pathological test matrix and a real-time programmable zone plate generator. Bitmap images can be downloaded to the SPG8000A's flash memory for arbitrary user-defined test patterns. ID text, burn-in time code, circle, and color logo overlays can be added to any test pattern, and several ancillary data packet types, including ancillary time code and user-defined packets, can be inserted into the SDI output signal.

The four SDI outputs can be configured to support 4K/UHD full frame, 100% and 75% color bars for quad link square division mode. This allows simple verification of your 4K/UHD workflow within the production studio or mobile truck. Note: VPIDs are compliant only to HD and 3G formats in 4K/UHD formats.

Also included is an audio/video delay test sequence, which in conjunction with a Tektronix waveform monitor, can be used to ensure A/V delay compliance.

Audio reference signals

Several audio reference signals are available on the SPG8000A. The base configuration includes a 48 kHz word clock output, and Option AG adds five AES/EBU output pairs. One pair is dedicated to a Digital Audio Reference Signal (DARS) output, and the other four pairs are used for test tone generation, with independent tone frequency and amplitude settings for each of the 8 channels.

Audio tone generation, including Dolby E format, is provided with Option SDI as embedded audio on each of the SDI outputs. Various Dolby E audio frame start locations can be set to test the error handling ability of the signal processing equipment in the signal path. Embedded Dolby E metadata are also included in the Dolby E test stream. Supported Dolby E program configurations include mono, stereo, 5.1 and 7.1 surround sound audio.

Remote access

The SPG8000A includes a 10/100/1000BASE-T Ethernet interface for remote access to the instrument. A web-based user interface can be used for all configuration settings and for monitoring system status.

Alarm and key status information is also available using Simple Network Management Protocol (SNMP) messaging, enabling easy integration with network management systems. Remote control and alarm reporting is also available using a general purpose interface (GPI). The SPG8000A has a front-panel USB port that can be used to backup and restore presets and other user data, and to perform system firmware upgrades.

Optional backup power supply

For mission-critical applications, the SPG8000A can be configured with a second power supply module. Under normal operation, the designated backup supply is seldom used, ensuring that it has maximum remaining life should the primary supply fail. The backup supply is load-tested once each day to verify that it can serve as the primary supply if necessary.

The usage time of each supply is logged as “temperature-weighted hours”, a metric that best estimates the calculated life of the supply. A front-panel LED will indicate when the supply is nearing its end-of-life.

If the primary supply is interrupted for any reason, the system will switch to the backup without any disruption to system operation. Power supply modules are hot-swappable for easy replacement, and feature a locking mechanism to prevent the power cable from accidental disconnection.

Input specifications

All specifications apply to all SPG8000A configurations unless noted otherwise.

Reference input

Connector	BNC ×2, passive loop-through
-----------	------------------------------

Input impedance	75 Ω
-----------------	------

Input signal

NTSC/PAL black burst

HD tri-level sync

1080/60/59.94/50I

1080/30/29.97/25/24/23.98P

1080/24/23.98PsF

720/60/59.94/50P

10 MHz continuous wave

Amplitude range	-8 dB to +6 dB
-----------------	----------------

S/N ratio	>40 dB
-----------	--------

SCH phase	0 ±40°
-----------	--------

Return loss	≥30 dB at 300 kHz to 10 MHz
-------------	-----------------------------

Lock stability

±3 dB amplitude change	<1 ns
------------------------	-------

Jitter with burst lock	<0.5°
------------------------	-------

Jitter with sync lock	<1 ns
-----------------------	-------

Jitter with CW lock	<1 ns (typ. 1°)
---------------------	-----------------

Genlock

Timing adjustment range	Anywhere in the color frame
-------------------------	-----------------------------

Timing adjustment resolution	<0.5° of NTSC/PAL subcarrier, 1 ns with tri-level sync input
------------------------------	--

Color framing	Keeps accuracy even with ±45° SCH error of input reference signal
---------------	---

Genlock tune range	±7.5 × 10 ⁻⁶
--------------------	-------------------------

GPS / GLONASS receiver (Option GPS)

Type	L1 frequency (GPS - 1575.42 MHz, GLONASS - 1602.00 MHz), C/A Code, 32 channels
Time accuracy	Within 150 ns to GPS/GLONASS/UTC
Acquisition time	2 minutes on boot up with warm oven, good satellite signal, and known position

GPS / GLONASS antenna input (Option GPS)

Connector	BNC
Input impedance	50 Ω , internally terminated
DC antenna power output voltage	3.3 V or 5 V at 55 mA
Fault protection	Short-circuit/open detection and protection
Return loss	8 dB at 1575 MHz

Time reference

Source	GPS or GLONASS signal, PTP input, LTC input, VITC read from NTSC/PAL genlock input, or can enter manually
Time zone offset	-23:59 to +23:59
Daylight saving adjustment	Start/end from recurring calendar or manually scheduled, with adjustable offset
Leap second adjustment	Inserted at 00:00 UTC on the scheduled date, or deferred up to 24 hours

LTC input

Connector	Available through D-sub 15-pin connector; Optional break-out cable to XLR connector available
Formats	24 fps (24 Hz or 23.98 Hz), 25 fps, 30 fps, 30 fps drop-frame (29.97 Hz) per SMPTE 12M
Timing to video	Compliant with SMPTE 12M and continues to operate over at least 90% of possible timing range
Signal voltage range	0.5 to 10 V_{p-p} differential, 1 to 5 V_{p-p} single ended
Noise tolerance	-30 dB SNR RMS white noise with 10 kHz BW to the p-p signal level, or -10 dB SNR for 5 MHz white noise
Hum tolerance	0 dB hum-to-signal ratio
Error immunity	100 consecutive frames with consistent time code must be detected for time to be considered valid
Input impedance	Nominal 600 Ω differential, 300 Ω single ended

Output specifications

All specifications apply to all SPG8000A configurations unless noted otherwise.

Reference outputs

Number of outputs	3 analog sync outputs in base configuration, up to 7 with Option BG
Connector	BNC ×3-7
Formats	NTSC/PAL black burst, HD tri-level sync, 10 MHz continuous wave, or 1 pps
Format Combinations	
NTSC/PAL black burst	Available on all outputs (BLACK 1-5 and CMPST 1-2)
HD tri-level sync	Black outputs 1-3 can independently produce any of the formats from the following rate groups: <ul style="list-style-type: none"> - Integer: 720 (50p, 60p), 1080 (24sF, 24p, 25p, 30p, 48p, 50i, 50p, 60i, 60p) - Non-integer: 720 (59.94p), 1080 (23.98sF, 23.98p, 29.97p, 47.95p, 59.94i, 59.94p) Black outputs 4-5 can independently produce any of the formats from the following rate groups: <ul style="list-style-type: none"> - Integer: 720 (50p, 60p), 1080 (24sF, 24p, 25p, 30p, 50i, 60i) - Non-integer: 720 (59.94p), 1080 (23.98sF, 23.98p, 29.97p, 59.94i)
10 MHz CW	BLACK 3 output only
1 pps	Black outputs 1-3 only
Output impedance	75 Ω
Return loss	≥40 dB from 300 kHz to 5 MHz ≥25 dB from 5 MHz to 30 MHz

Black burst mode for reference sync outputs

Standards	SMPTE 170M, ITU-R BT.1700-1, EBU N14, SMPTE RP154, RP318M-B
Formats	NTSC-M (7.5 IRE black), NTSC-J (0 IRE black), PAL-B
Time Code	Optional VITC insertion
Line	One or two lines, user selectable
Source	Time-of-day with adjustable offset, or program (elapsed) time counter
Amplitude accuracy	±2%
SCH phase	< ±5°
Timing adjustment	Independent per output
Range	Anywhere in the color frame
Resolution	Clock resolution 18.5 ns (1/54 MHz) Fine resolution 0.1 ns on BLACK 1-3

HD tri-level mode for reference sync outputs

Standards	SMPTE 240M, 274M, 296M, RP211
Formats	1080/60/59.94/50I Black 1-3 outputs: 1080/60/59.94/50/48/47.95/30/29.97/25/24/23.98P Black 4-5 outputs: 1080/30/29.97/25/24/23.98P 1080/24/23.98PsF 720/60/59.94/50P
Amplitude accuracy	±2%
Timing adjustment	Independent per output
Range	Anywhere in the color frame
Resolution	Clock resolution 13.5 ns (1/74.25 MHz) Fine resolution 0.2 ns for BLACK 1-3

LTC outputs

Number of outputs	3 or 4 (LTC1 is selectable as input or output)
Connector	Available through D-sub 15-pin connector; Optional break-out cable to XLR connectors available
Formats	24 fps (24 Hz or 23.98 Hz), 25 fps, 30 fps, 30 fps drop-frame (29.97 Hz) per SMPTE 12M
Source	Time-of-day with adjustable offset, or program (elapsed) time counter
Output amplitude	5 V ±10%, adjustable from 0.5 V to 5 V in 0.5 V steps

Word clock output

Connector	BNC ×1
Output level	5 V DC (CMOS compatible) or 1 V AC into 75 Ω (AES level)
Frequency	48 kHz

Serial digital test signal outputs (Option SDI)

Number of outputs	2 independent test pattern generators with 2 outputs each
Video signal	Test pattern on both outputs or test pattern on one output and digital black on the second output
Connector	BNC ×4
Output impedance	75 Ω
Output amplitude	800 mV _{p-p} ±3%
Overshoot	≤1% (typical)

Serial digital test signal outputs (Option SDI)

Rise/Fall time	
HD, 3G	≤70 ps (typical) (20-80%)
SD	≤700 ps (typical) (20-80%)
Jitter	
HD, 3G	≤40 ps (typical) (alignment)
	≤80 ps (typical) (timing)
SD	≤200 ps (typical) (alignment)
	≤200 ps (typical) (timing)
Timing adjustment	Independent per generator channel
Range	Anywhere in the frame
Resolution	One clock cycle at the Y, G, or X pixel rate
Return loss	≥15 dB from 5 MHz to 2.5 GHz (typical)
	≥10 dB from 2.5 GHz to 3 GHz (typical)

Standard Definition (SD) formats (Option SDI)

Standards	SMPTE 259M, 272M, 291M
Bit rate	270 Mb/s
Formats	720×486/59.94/I (525 lines)
	720×576/50/I (625 lines)

High Definition (HD) formats (Option SDI)

Standards	SMPTE 274M, 291M, 292M, 296M
Bit rate	1.485 Gb/s and 1.485/1.001 Gb/s
Formats	1280×720/60/59.94/50/30/29.97/25/24/23.98P
	1920×1080/60/59.94/50I
	1920×1080/30/29.97/25/24/23.98P
	1920×1080/30/29.97/25/24/23.98PsF

3 Gb/s formats (Option SDI)

Standards	SMPTE 291M, 424M, 425-1
Bit rate	2.97 Gb/s and 2.97/1.001 Gb/s
Alpha channel	Same as Y/G channel or flat field (0% to 100% in 10% steps)

3 Gb/s formats (Option SDI)

Formats		Sample structure	Frame/Field rates
Level A			
	1280×720	4:4:4 Y'C _B C _R (+A)/10-bit 4:4:4 R'G'B'(A)/10-bit	60/59.94/50/30/29.97/25/24/23.98P
	1920×1080	4:2:2 Y'C _B C _R /10-bit	60/59.94/50P
		4:4:4 Y'C _B C _R (+A)/10-bit 4:4:4 R'G'B'(A)/10-bit	60/59.94/50I 30/29.97/25/24/23.98P 30/29.97/25/24/23.98PsF
		4:4:4 Y'C _B C _R /12-bit 4:4:4 R'G'B'/12-bit	60/59.94/50I 30/29.97/25/24/23.98P
		4:2:2 Y'C _B C _R /12-bit	60/59.94/50I 30/29.97/25/24/23.98P 30/29.97/25/24/23.98PsF
	2048×1080	4:4:4 R'G'B'/12-bit 4:4:4 X'Y'Z'/12-bit	30/29.97/25/24/23.98P 30/29.97/25/24/23.98PsF
Level B Dual-Link			
	1920×1080	4:2:2 Y'C _B C _R /10-bit	60/59.94/50P
		4:4:4 Y'C _B C _R (+A)/10-bit 4:4:4 R'G'B'(A)/10-bit	60/59.94/50I 30/29.97/25/24/23.98P 30/29.97/25/24/23.98PsF
		4:4:4 Y'C _B C _R /12-bit 4:4:4 R'G'B'/12-bit	60/59.94/50I 30/29.97/25/24/23.98P 30/29.97/25/24/23.98PsF
		4:2:2 Y'C _B C _R (+A)/12-bit	60/59.94/50I 30/29.97/25/24/23.98P 30/29.97/25/24/23.98PsF
	2048×1080	4:4:4 R'G'B'/12-bit 4:4:4 X'Y'Z'/12-bit	30/29.97/25/24/23.98P 30/29.97/25/24/23.98PsF
Level B Dual-Stream			
	2× 1920×1080	4:2:2 Y'C _B C _R (+A)/10-bit	60/59.94/50I 30/29.97/25/24/23.98P 30/29.97/25/24/23.98PsF
	2× 1280×720	4:2:2 Y'C _B C _R (+A)/10-bit	60/59.94/50/30/29.97/25/24/23.98P

4K/UHD outputs (Option SDI)

Output mode	Quad Link Square Division
Standards	All supported 3G/HD-SDI standards
Formats	All supported 2048×1080 and 1920×1080 3G/HD-SDI formats
Test signals	Full frame 75% and 100% color bars only

Test patterns (SD/HD/3G-SDI)

Color bars	100%, 75%, SMPTE EG1, SMPTE RP219, SMPTE EG432-1
Flat field	Full field 0% (Black), 50%, 100% (White), Red, Green, Blue, Cyan, Magenta, Yellow
Linearity test	Ramp, Limit Ramp, Valid Ramp, Shallow Ramp Matrix, 5/10 Step Staircase
Monitor	Checkerboard, Clean Aperture, Convergence, Black-White Step Scale, Black-Dark Gray Step Scale, Pluge and Luma Reference, Production Aperture, Window, SMPTE 303M Color Reference, ChromaDuMonde
SDI pathological	Equalizer Test, PLL Test, SDI Matrix per SMPTE RP178/RP198
Frequency response	Multiburst, Real-time parametric moving zone plate
Pulses	2T Pulse and Bar, Color Pulses, Co-siting Pulse
Full-frame picture	User-defined bitmap files (BMP format) can be downloaded to flash memory and displayed in any format

Video overlays

Logo	24-bit color bitmap file (BMP format) or 32-bit with transparency, up to 1920×1080 pixel size. Adjustable on-screen position.
ID text	Programmable string from front-panel entry (printable ASCII characters) or downloaded text file (UTF-8 encoding) for any Unicode characters. A preinstalled TrueType font is provided for Latin, Greek, and Cyrillic characters; an alternate TrueType font file may be downloaded to support other character sets. Character size is adjustable (%APH, 0.1% resolution).
Burnt-in time code	On-screen display of the current time code value (HH:MM:SS:FF) for the output, updated every field. Character size is 10% APH.
Circle	Adjustable diameter (%APH).
Border	Text and circle overlays are rendered as near-white objects, with a selectable enclosing near-black bounding area.
Blink	Text and circle overlays can blink on and off for dynamic on-screen activity.
Position	All overlay objects have adjustable on-screen position.

Embedded audio

Standards	SMPTE 272M (SD), 299 (HD/3G)
Active channels	16 channels (SD, HD, 3G-A), 32 channels (3G-B)
Sample frequency	48 kHz
Digital coding	24 bits (HD, 3G), 20 bits (SD)
Signal alignment	Async. and Sync. (no frame #), Synchronous (frame #)
Tone frequency	10.0 Hz to 20000.0 Hz, 0.5 Hz resolution
Level	-60 to 0 dBFS, 1 dB steps
Channel identification	Audible click, AES channel origin bytes

Ancillary data

Error detection and handling	EDH packet inserted in SD-SDI signals per SMPTE RP165
Video payload identifier	Optional VPID insertion per SMPTE 352M
Ancillary time code	Optional ATC insertion per SMPTE 12M-2
Format	ATC-LTC and/or ATC-VITC
Source	Time-of-day with adjustable offset, or program (elapsed) time counter
User-programmable ANC packet	
Content	DID, SDID, DC, UDW (255), CS; Automatically calculate checksum and/or parity, or manual override
Location	Line number, sample offset, luma/chroma channel, virtual link (3G)
Mode	Continuous insertion or single packet

Composite analog test signal outputs (Option BG)

Number of outputs	2 independent test pattern generators
Connector	BNC ×2
Standards	SMPTE 170M, ITU-R BT.1700-1, EBU N14, SMPTE RP154, RP318
Formats	NTSC-M (7.5 IRE black), NTSC-J (0 IRE black), and PAL-B
Test patterns	
NTSC	100% Color Bars, 75% Color Bars, SMPTE EG1 Color Bars, 40% Flat Field, Convergence, Pluge and Luma Reference, Black with 10 Field ID
PAL	100% Color Bars, 75% Color Bars, 100% Color Bars over Red, 75% Color Bars over Red, 40% Flat Field, Convergence, Pluge and Luma Reference
Time code	Optional VITC insertion
Line	One or two lines, user selectable
Source	Time-of-day with adjustable offset, or program (elapsed) time counter
Luminance amplitude accuracy	±1% (video at 100%)
Chroma amplitude accuracy	±2%
Timing adjustment	Independent per output
Range	Anywhere in the color frame
Resolution	Clock resolution 18.5 ns (1/54 MHz)
Output impedance	75 Ω
Return loss	≥30 dB to 30 MHz

Audio test signal outputs (Option AG)

Standards	ANSI S4.40 (AES3), AES3-ID
Outputs	8 channels (4 AES/EBU pairs)
Output impedance	75 Ω , unbalanced
Connector	BNC \times 4
Output amplitude	1 V \pm 0.2 V
Frequency (Hz)	50, 100, 150, 200, 250, 300, 400, 500, 600, 750, 800, 1000, 1200, 1500, 1600, 2000, 2400, 3000, 3200, 4000, 4800, 5000, 6000, 8000, 9600, 10000, 12000, 15000, 16000, 20000
Level	-60 to 0 dBFS, 1 dB step
Sampling frequency	48 kHz (lock on video signal)
Quantization	Linear PCM, 20 or 24 bits (2's complement)
Transfer coding	Bi-phase mark
Audio/Video synchronization	Free run or synchronized with video framing
Timing adjustment	\pm 160 ms in 1 ms steps

DARS output

Outputs	2 channels (1 AES/EBU pair)
Output impedance	75 Ω , unbalanced
Connector	BNC \times 1
Output amplitude	1 \pm 0.2 V
Frequency, level	No signal
Sampling frequency	48 kHz (lock on video signal)
Quantization	Linear PCM, 20 or 24 s (2's complement)
Transfer coding	Bi-phase mark

Option PTP specifications

All specifications apply to all SPG8000A configurations which have Option PTP installed.

Connectors

Ethernet connection 1	RJ45 8P8C connector supporting 10/100/1000 Base T
Ethernet connection 2	SFP cage accepting 1 Gigabit Ethernet modules, MSA standard (orderable as Option LX and Option SX)

Internet protocol version	IPv4
----------------------------------	------

Profiles supported	ST 2059-2, AES67, General, AVB
---------------------------	--------------------------------

Operating modes	In Internal, GPS or Genlock reference modes, user may select one or two PTP masters. If locked to PTP input, then user may enable one PTP master.
------------------------	---

Communication mode support

General AVB and AES67 profiles	Supports both Multicast and Unicast
ST2059-2 profile master mode	Supports Multicast, Mixed, Mixed without grant negotiation, and Unicast
ST2059-2 profile slave mode	Supports Multicast, Mixed with negotiation, Mixed without negotiation and Unicast with negotiation

Maximum message rates	Total maximum message rate for the two masters is 512 per second on the Announce message and 8192 per second on the Sync and Delay Response messages At 8 messages per second, this accommodates approximately 500 end points in Unicast and 1000 end points in Multicast; higher message rates will reduce the number of end points that may be supported
------------------------------	---

Master mode ST 2059-2 Synchronization Metadata TLV support	Master outputs Multicast SM TLV when active
---	---

Slave mode lock time at 8 messages per second	Typically three minutes if not previously locked
--	--

Slave mode lock range	± 7.5 ppm
------------------------------	---------------

Timing offset	Typically less than 1 μ s for up to 7 hops of PTP compliant switches and less than 500 ns of uncompensated asymmetric network delay
----------------------	---

Asymmetric delay correction	Slave supports manual entry or a delay compensation value up to ± 20 μ s
------------------------------------	--

General specifications

All specifications apply to all SPG8000A configurations unless noted otherwise.

Internal oscillator

Frequency accuracy in Internal mode	$\pm 135 \times 10^{-9}$ over 1-year calibration interval. Typically $\pm 10 \times 10^{-9}$ just after adjustment.
Frequency accuracy over temperature	$\pm 2 \times 10^{-9}$ for ± 5 °C variation $\pm 10 \times 10^{-9}$ for 0 to 50 °C
Frequency variation from vibration and shock	$\pm 25 \times 10^{-9}$ from 6 ms half-sine shocks over 20g
Frequency drift	$< \pm 100 \times 10^{-9}$ per year for internal and Stay GenLock® modes at constant temperature

Remote access

Network interface	10/100/1000 BASE-T
Configuration	Web-based user interface, HTML with JavaScript
Management	SNMPv2

General Purpose Interface (GPI)

Connector	Two outputs and one input also available on the same 15-pin D-sub connector as the LTC signals. Optional breakout cable makes these available on BNC connectors.
Outputs 1, 2	Two, user-selectable to assert on specific events Assert on one or more of: GPS/GLONASS signal warning, loss of lock, near loss of lock, loss of input signal, or timer expiration
Output level	0.5-5 V
Inputs 1 2	Two (using 3 pins on connector) Pin 3 is programmable to be either a user-selectable input to signal GPS/GLONASS reacquisition, jam sync, or restart timer, or is the MSB of the preset input group When pin 3 is programmed to be part of the preset input group, then three pins on the connector can be used to recall presets 1-7. When pin 3 is programmed to be a user-selectable input, then two pins on the connector can be used to recall presets 1-3.
Input level	0.8-2.4 V

Physical

Dimensions

Height	44 mm (1.7 in.)
Width	483 mm (19 in.)
Depth	559 mm (21.5 in.)

Weight (net)	4.85 kg (10.7 lb.)
--------------	--------------------

Environmental

Power consumption	130 VA (max) on active power supply input 130 VA on backup supply input during 5 s daily load test
-------------------	---

Temperature	0 to +50 °C
-------------	-------------

Altitude	3,000 m (9,842 ft.)
----------	---------------------

Source voltage	100 to 240 VAC \pm 10%, 50/60 Hz
----------------	------------------------------------

Ordering information

Models

SPG8000A	Master Sync / Master Clock Reference Generator base unit Includes: Genlock input with loop-through output, 3 analog composite black or HD tri-level sync outputs, LTC input/outputs (4 out or 1 in/3 out), 48 kHz word clock output; general purpose interface, 10/100/1000 Ethernet interface with Web UI support, SNMP support.
SPG8000ANT	GPS/GLONASS rooftop antenna (5.0 VDC, 1588 MHz range signals, F connector) for receiving GPS and/or GLONASS satellite signals. The antenna works with the integrated internal GPS/GLONASS receiver of a SPG8000A with Option GPS.

Instrument options

Product options

AG	Add a DARS output plus four AES/EBU test signal outputs (eight audio channels)
BG	Add two analog black burst or tri-level sync outputs plus two additional analog black burst or composite analog test signal outputs
GPS	Add GPS/GLONASS master clock synchronization capability (including integrated GPS/GLONASS receiver) plus NTP server support
PTP	Add PTP (IEEE 1588) support, including SMPTE ST 2059-2 and AES67 profiles
SDI	Add two independent sets of 3G/HD/SD-SDI test and test/black signal generation outputs (including embedded Dolby E audio test signal)

Accessory options

DPW	Add a second, hot-swappable, redundant (backup) power supply and a second power cord
LX	Add a Gigabit Ethernet optical SFP module, 1310 nm, single-mode, LC connector
RACK	Add rackmount slides and rails kit for SPG8000A (1 RU height, standard full depth)
SX	Add a Gigabit Ethernet optical SFP module, 850 nm, multimode, LC connector
XLR	Add an adapter cable (six feet long) from 15-pin D-sub GPI/LTC connector on the SPG8000A to four XLR male connectors (for LTC input/outputs) and three BNC male connectors (for GPI input/outputs)

Power plug options

Opt. A0	North America power plug (115 V, 60 Hz)
Opt. A1	Universal Euro power plug (220 V, 50 Hz)
Opt. A2	United Kingdom power plug (240 V, 50 Hz)
Opt. A3	Australia power plug (240 V, 50 Hz)
Opt. A5	Switzerland power plug (220 V, 50 Hz)
Opt. A6	Japan power plug (100 V, 50/60 Hz)
Opt. A10	China power plug (50 Hz)
Opt. A11	India power plug (50 Hz)
Opt. A12	Brazil power plug (60 Hz)
Opt. A99	No power cord

Service options

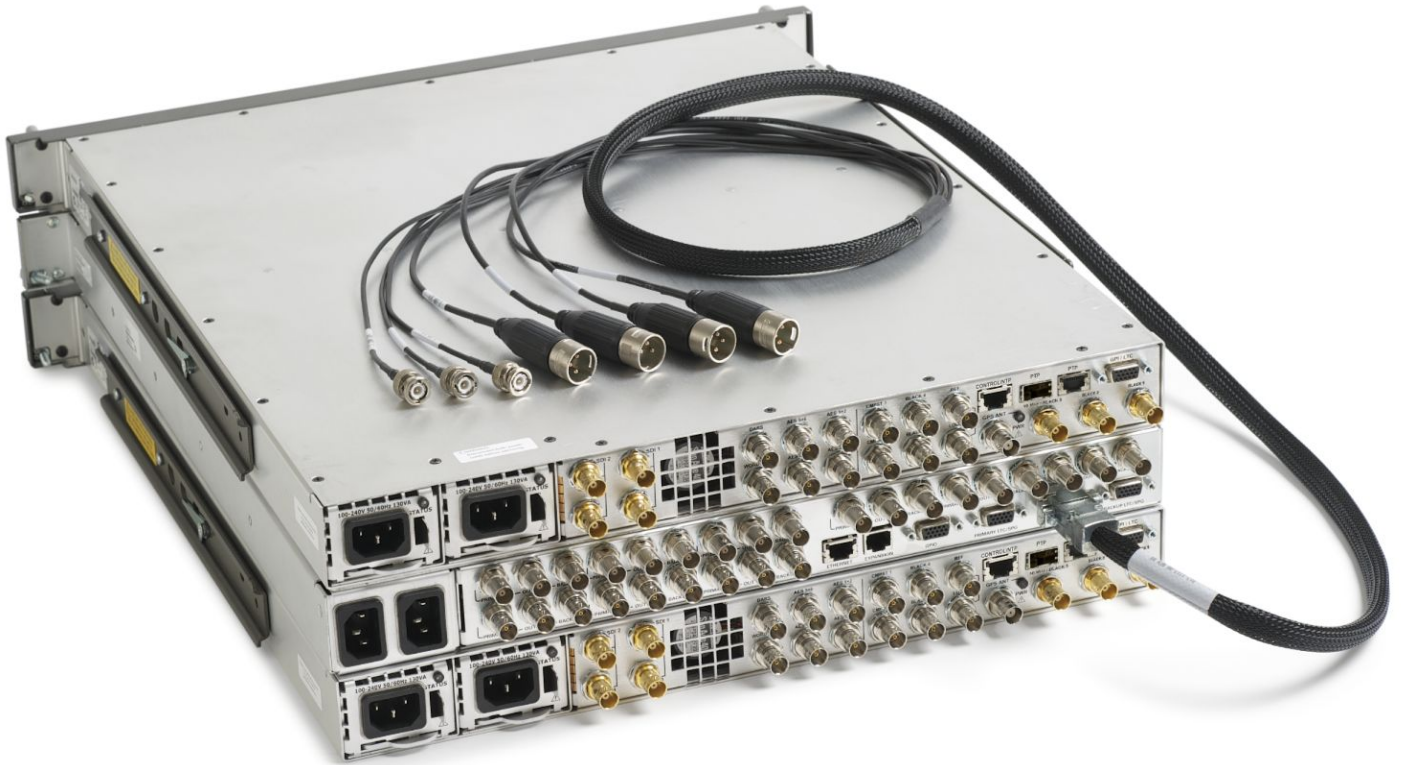
Opt. C3	Calibration Service 3 Years
Opt. C5	Calibration Service 5 Years
Opt. D1	Calibration Data Report
Opt. D3	Calibration Data Report 3 Years (with Opt. C3)
Opt. D5	Calibration Data Report 5 Years (with Opt. C5)
Opt. G3	Complete Care 3 Years (includes loaner, scheduled calibration, and more)
Opt. G5	Complete Care 5 Years (includes loaner, scheduled calibration, and more)
Opt. R3	Repair Service 3 Years (including warranty)
Opt. R5	Repair Service 5 Years (including warranty)

Repair service options

Opt. R3DW	Repair Service Coverage 3 Years (includes product warranty period). 3-year period starts at time of instrument purchase.
Opt. R5DW	Repair Service Coverage 5 Years (includes product warranty period). 5-year period starts at time of instrument purchase.

SPG800AUP field upgrades

DPW	Add a replacement or a second, hot-swappable, redundant (backup) power supply. A power plug option must be specified. See Power plug options .
LX	Add a Gigabit Ethernet optical SFP module, 1310 nm, single-mode, LC connector
PTP	Add PTP (IEEE 1588) support, including SMPTE ST 2059-2 and AES67 profiles
RACK	Add rackmount slides and rails kit for SPG8000A (1 RU height, standard full depth)
SX	Add a Gigabit Ethernet optical SFP module, 850 nm, multimode, LC connector
XLR	Add an adapter cable (six feet long) from 15-pin D-sub GPI/LTC connector on the SPG8000A to four XLR male connectors (for LTC input/outputs) and three BNC male connectors (for GPI input/outputs)



Option XLR adapter cable



Tektronix is registered to ISO 9001 and ISO 14001 by SRI Quality System Registrar.

ASEAN / Australasia (65) 6356 3900
Belgium 00800 2255 4835*
Central East Europe and the Baltics +41 52 675 3777
Finland +41 52 675 3777
Hong Kong 400 820 5835
Japan 81 (3) 6714 3010
Middle East, Asia, and North Africa +41 52 675 3777
People's Republic of China 400 820 5835
Republic of Korea +822 6917 5084, 822 6917 5080
Spain 00800 2255 4835*
Taiwan 886 (2) 2656 6688

Austria 00800 2255 4835*
Brazil +55 (11) 3759 7627
Central Europe & Greece +41 52 675 3777
France 00800 2255 4835*
India 000 800 650 1835
Luxembourg +41 52 675 3777
The Netherlands 00800 2255 4835*
Poland +41 52 675 3777
Russia & CIS +7 (495) 6647564
Sweden 00800 2255 4835*
United Kingdom & Ireland 00800 2255 4835*

Balkans, Israel, South Africa and other ISE Countries +41 52 675 3777
Canada 1 800 833 9200
Denmark +45 80 88 1401
Germany 00800 2255 4835*
Italy 00800 2255 4835*
Mexico, Central/South America & Caribbean 52 (55) 56 04 50 90
Norway 800 16098
Portugal 80 08 12370
South Africa +41 52 675 3777
Switzerland 00800 2255 4835*
USA 1 800 833 9200

* European toll-free number. If not accessible, call: +41 52 675 3777

For Further Information. Tektronix maintains a comprehensive, constantly expanding collection of application notes, technical briefs and other resources to help engineers working on the cutting edge of technology. Please visit www.tek.com.

Copyright © Tektronix, Inc. All rights reserved. Tektronix products are covered by U.S. and foreign patents, issued and pending. Information in this publication supersedes that in all previously published material. Specification and price change privileges reserved. TEKTRONIX and TEK are registered trademarks of Tektronix, Inc. All other trade names referenced are the service marks, trademarks, or registered trademarks of their respective companies.



12 Feb 2016 20W-60261-1

